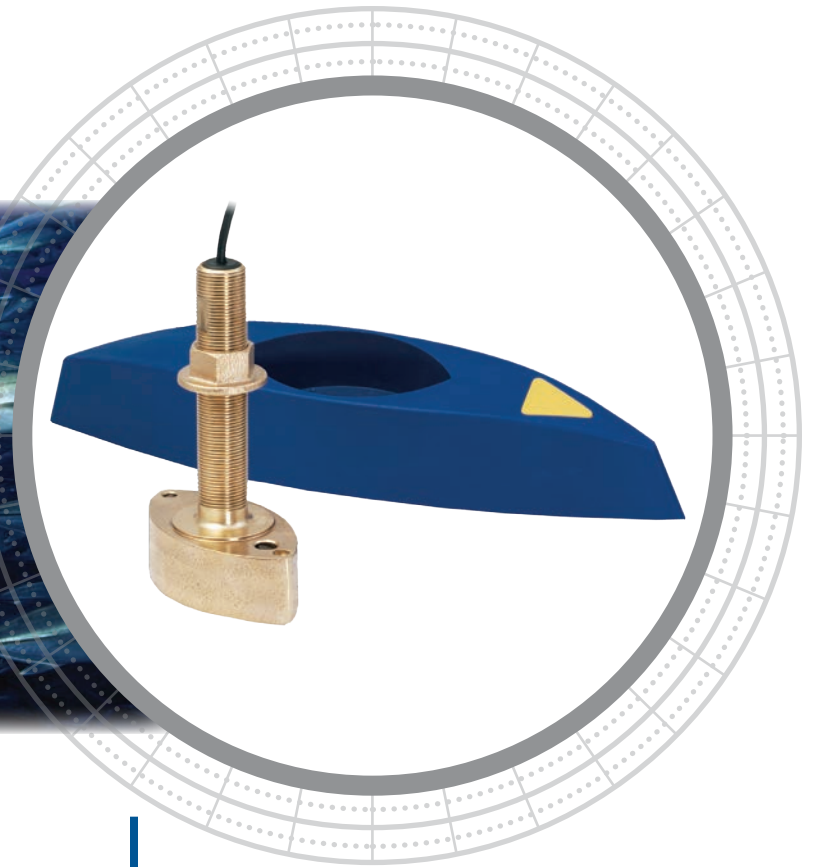


B45



Compact and Budget-Minded!

The B45 is Airmar's smallest, bronze, thru-hull stem, offering quality design at an economical price. The classic housing is streamlined to deflect aerated water from the transducer's face, providing solid echo returns.

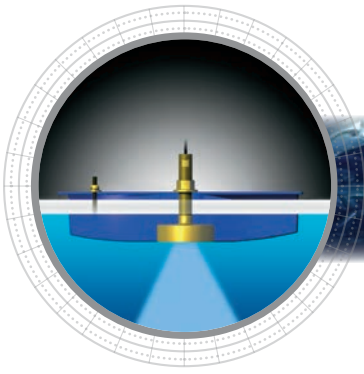
Quality Performance Results

Get the most out of a transducer installation. See defined return echoes and clean crisp images. Utilizing Airmar's High-Performance Fairing will boost echosounder performance and provide optimal results for all installations.

Thru-Hull 600 W

Features

- Recommended for planing-hull powerboats and cruising sailboats up to 9 m (30')
- Good sensitivity in a compact housing
- Fast-response water-temperature sensor provides $\pm 0.2^{\circ}\text{C}$ ($\pm 0.1^{\circ}\text{F}$) accuracy



Technical Information

50/200 kHz-A		
Number of Elements and Configuration	○	
Beamwidth (@-3 dB)	45°	12°
RMS Power (W)	600 W	600 W
TVR	155 dB	164 dB
RVR	-174 dB	-184 dB
FOM	-31 dB	-21 dB
Q	28	31
Impedance	200 Ω	375 Ω

MAXIMUM DEPTH RANGE	
50 kHz	200 kHz
235 m to 353 m (800' to 1,200')	118 m to 206 m (400' to 700')

BEAM DIAMETER VS DEPTH		
Depth	50 kHz	200 kHz
9 m (30')	8 m (25')	2 m (6')
30 m (100')	25 m (83')	6 m (21')
122 m (400')	101 m (331')	26 m (84')
305 m (1,000')	252 m (828')	64 m (210')

TRANSDUCER COMPARISON			
Model	Power	Rating	Performance Increase
B45 B744V B744VL	600 W	Good	Benchmark model for comparison
B258	1 kW	Better	25 times more sensitive at 50 kHz 16 times more sensitive at 200 kHz
B260 SS260	1 kW	Best	50 times more sensitive at 50 kHz 13 times more sensitive at 200 kHz
R99	2 kW	Superb	200 times more sensitive at 50 kHz 32 times more sensitive at 200 kHz
R209 R309	3 kW	Ultimate	400 times more sensitive at 50 kHz 32 times more sensitive at 200 kHz

Due to the wide beam of the SS270W, it has been omitted from the table.

SPECIFICATIONS
Weight: 2.5 kg (5.5 lb)
Hull Deadrise: Up to 26° with fairing
Acoustic Window: Urethane

DIMENSIONS

