



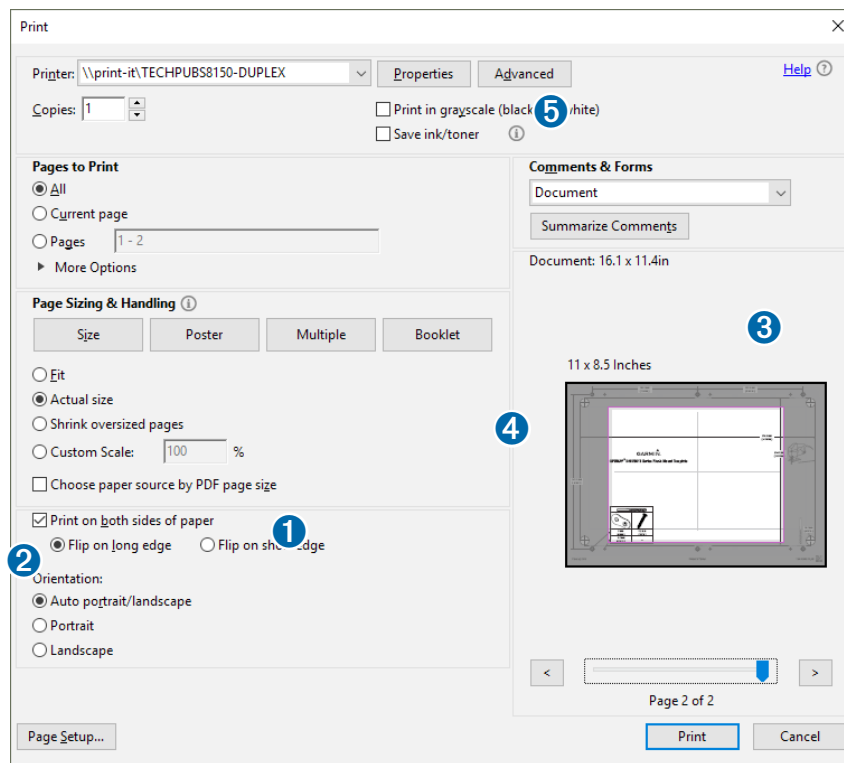
Printing a Mounting Template

NOTICE

It is not recommended that you print a mounting template on your own. Use the template that came in the product box.

If you do print the template, you must follow these instructions for printing a mounting template precisely. To print large templates, you need large enough paper and printer. Failure to have the correct sized paper and printer, or a failure to follow these instructions, may result in an incorrectly sized template and therefore an incorrect cutout (too large or too small) on the mounting surface of your boat.

1 Select **File > Print**.



2 Select **None** for **Page Scaling**.

3 Ensure the check mark is next to **Auto-Rotate and Center**.

4 Drag the arrow to the right, to view page 2 in the window below.

4 Verify that the paper size is larger than the template.

In this example, the paper is not larger than the template.

5 If the paper size is not large enough, select **Properties** and select a **Page Size** that is larger than the template.

NOTICE

Fusion is not responsible for any damages or expenses resulting from a miscut mounting surface arising from a failure to follow these instructions.

GARMIN®

APK 10 Horizontal Mounting Template

	Flush mount	Montaje empotrado	Tasoasennus	Surface mount	Montaje empotrado	Pinta-asennus
1	Montage encastré	Montagem embutida	Innbygging	2	Montage à plat pont	Overflatemontering
	Montaggio a incasso	Planmontering	Nedsänkt montering		Montaggio su superficie	Ytmontering
	Bündige Montage	Verzonken montage	嵌入式安裝		Aufgesetzte Montage	表面安裝

