

Printing a Mounting Template

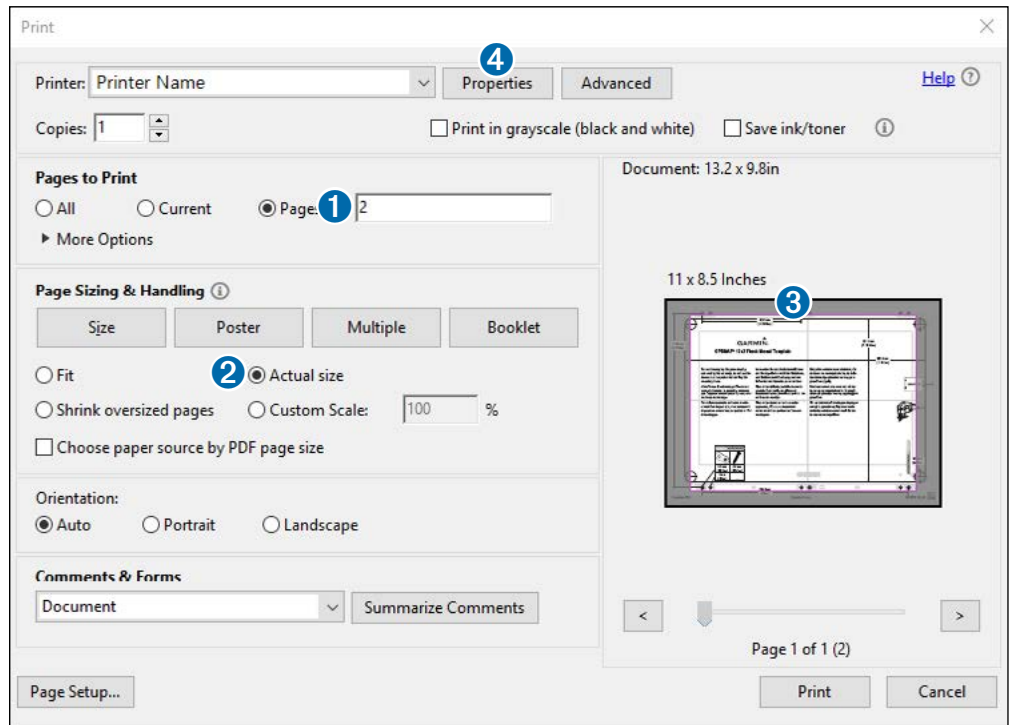
NOTICE

It is not recommended that you print a mounting template on your own. Use the template that came in the product box.

If you do print the template, you must follow these instructions for printing a mounting template precisely. To print large templates, you need large enough paper and printer. Failure to have the correct sized paper and printer, or a failure to follow these instructions, may result in an incorrectly sized template and therefore an incorrect cutout (too large or too small) on the mounting surface of your boat.

NOTE: The options and locations of the options differ between Adobe Acrobat versions and other PDF viewing/printing applications. Be sure the scaling is 100% before printing.

- 1 Select **File > Print**.
- 2 Enter **2** in **Pages to Print** ①.
- 3 Select **Actual Size** ② for **Page Sizing & Handling**.
- 4 Verify that the paper size is larger than the template ③.
In this example, the paper is not larger than the template.
- 5 If the paper size is not large enough, select **Properties** ④ and select a **Paper Size** that is larger than the template.
- 6 After printing the template, use a ruler to measure at least one dimension line to ensure the template printed to 100% scale.

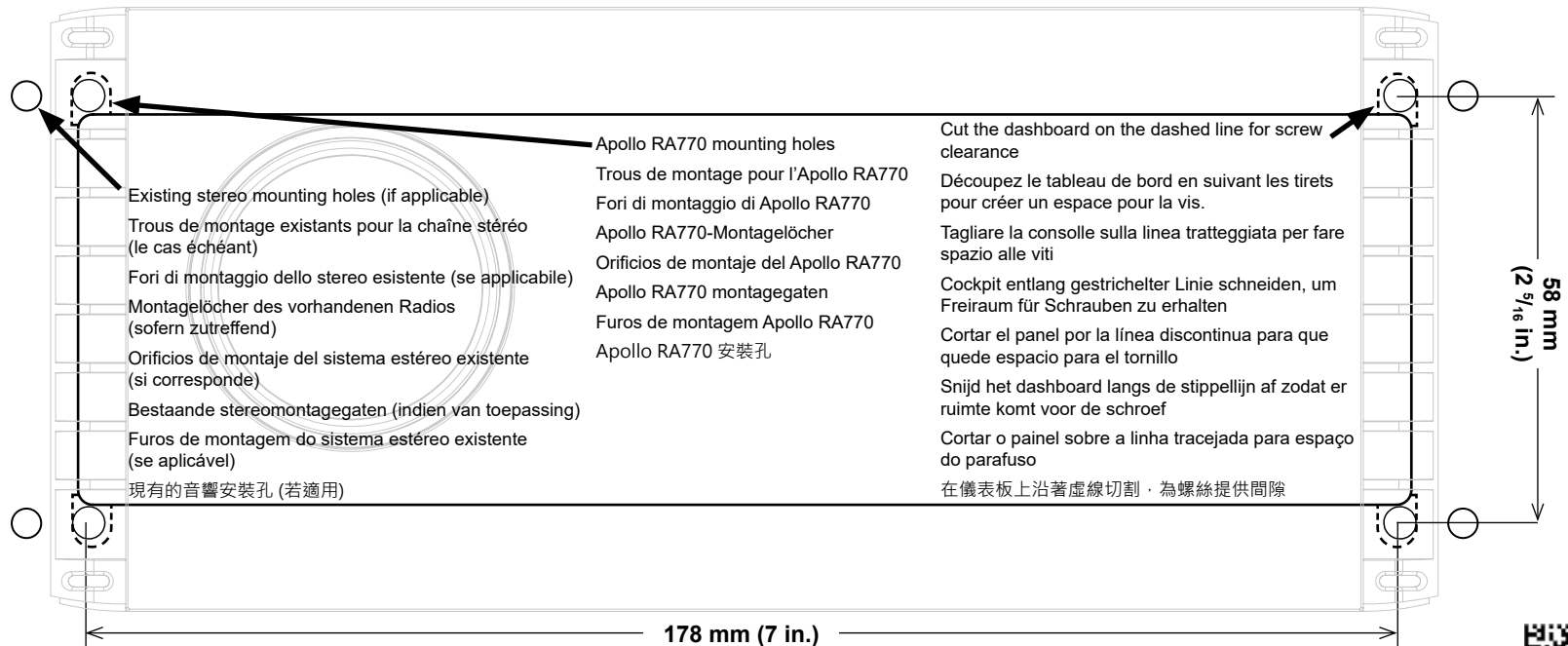


NOTICE

Garmin is not responsible for any damages or expenses resulting from a miscut mounting surface arising from a failure to follow these instructions.



Apollo™ RA770 Retrofit Template



Existing stereo mounting holes (if applicable)
Trous de montage existants pour la chaîne stéréo (le cas échéant)
Fori di montaggio dello stereo esistente (se applicabile)
Montagelöcher des vorhandenen Radios (sofern zutreffend)
Orificios de montaje del sistema estéreo existente (si corresponde)
Bestaande stereomontagegaten (indien van toepassing)
Furos de montagem do sistema estéreo existente (se aplicável)
現有的音響安裝孔 (若適用)

Apollo RA770 mounting holes
Trous de montage pour l'Apollo RA770
Fori di montaggio di Apollo RA770
Apollo RA770-Montagelöcher
Orificios de montaje del Apollo RA770
Apollo RA770 montagegaten
Furos de montagem Apollo RA770
Apollo RA770 安裝孔

Cut the dashboard on the dashed line for screw clearance
Découpez le tableau de bord en suivant les tirets pour créer un espace pour la vis.
Tagliare la consolle sulla linea tratteggiata per fare spazio alle viti
Cockpit entlang gestrichelter Linie schneiden, um Freiraum für Schrauben zu erhalten
Cortar el panel por la línea discontinua para que quede espacio para el tornillo
Snijd het dashboard langs de stippellijn af zodat er ruimte komt voor de schroef
Cortar o painel sobre a linha tracejada para espaço do parafuso
在儀表板上沿著虛線切割，為螺絲提供間隙

