

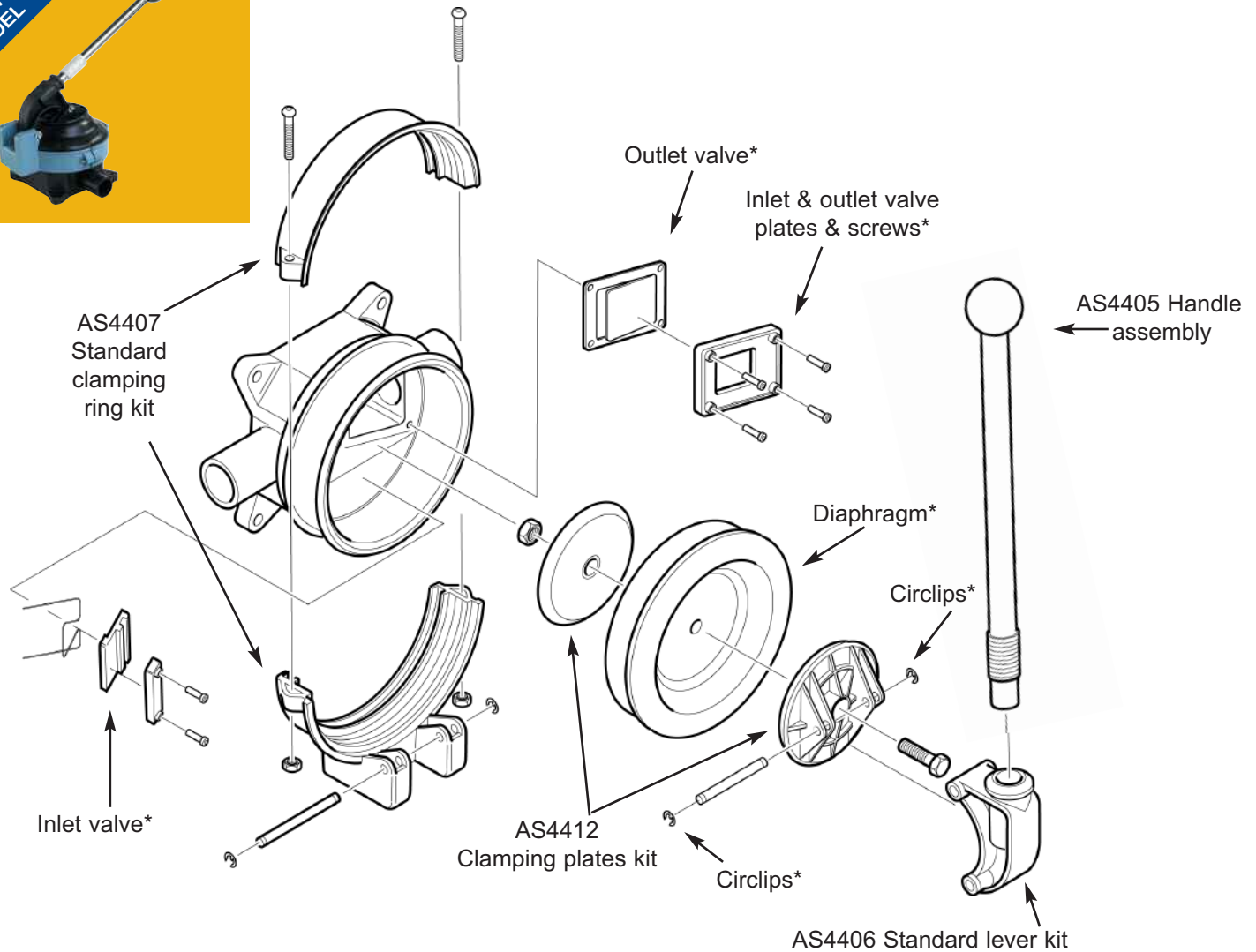


Manual Bilge Pumps

Gusher® Titan Standard

On Deck/Bulkhead: BP4402 - Powerful Lightweight Bilge and Waste Pump

Note* Contained in Service Kit AK4400 (Neoprene™) or AK4419 (Nitrile®)



Accessories

- AS4405 Spare Handle
- SB4222 Side Entry Strainer
- SB5865 Top Entry Strainer
- SF5425 1 1/2" Skin Fitting
- LV1215 1" / 1 1/2" Non Return Valve
- EB3488 1 1/2" Elbow

Service Kits (for On Deck/Bulkhead Model BP4402)

AK4400 Service Kit with Complete Set of Serviceable Parts for Titan (Neoprene™)

Qty	Containing
4	Circlip
6	Screw

- 1 Outlet valve spring
- 1 Clamping nut
- 1 Outlet valve plate
- 1 Inlet valve plate
- 1 Outlet valve
- 1 Inlet valve
- 1 Diaphragm

AK4419 Service Kit with Complete Set of Serviceable Parts for Titan (Nitrile®)

Qty	Containing
4	Circlip
6	Screw
1	Outlet valve spring
1	Clamping nut
1	Outlet valve plate
1	Inlet valve plate
1	Outlet valve
1	Inlet valve
1	Diaphragm

AS4406 Standard Lever kit

Qty	Containing
4	Circlip
1	Standard operating lever
1	Lever fulcrum pin
1	Standard fulcrum pin

AS4407 Standard Clamping Ring Kit

Qty	Containing
2	Nut
2	Screw
1	Top clamping ring
1	Bottom clamping ring
4	Circlip

AS4412 Clamping Plates Kit

Qty	Containing	Qty	Containing
1	Clamping bolt	1	Outer clamping plate
1	Clamping nut	1	Inner clamping plate
		4	Circlip

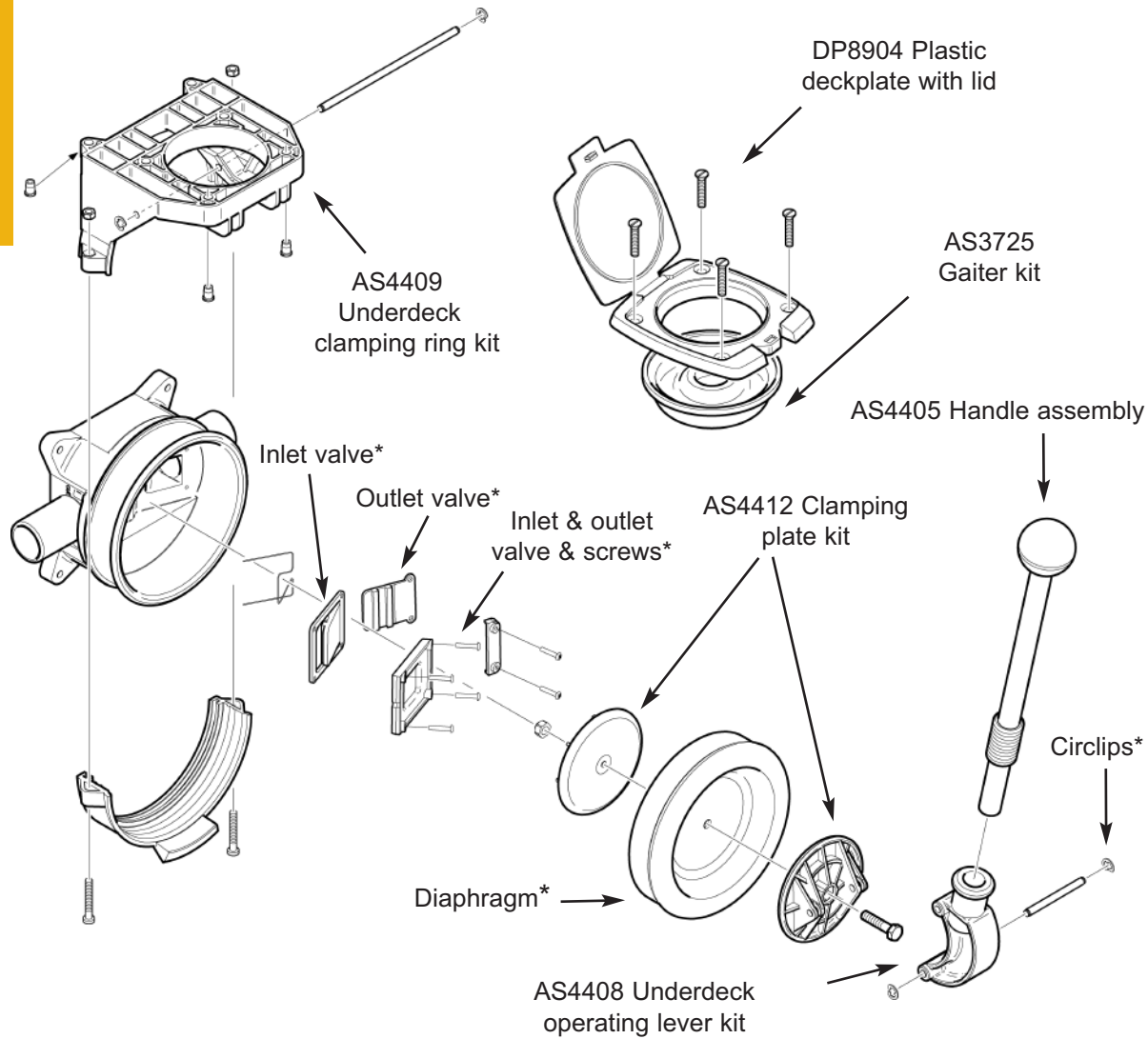


Manual Bilge Pumps

Gusher® Titan Underdeck

Underdeck: BP4410 - Powerful Lightweight Bilge and Waste Pump

Note* Contained in Service Kit AK4400 (Neoprene™) or AK4419 (Nitrile®)



Accessories

- DP8904 Plastic Deckplate Kit
- AS4405 Spare Handle
- SB4222 Side Entry Strainer
- SB5865 Top Entry Strainer
- SF5425 1 1/2" Skin Fitting
- LV1215 1" / 1 1/2" Non Return Valve
- EB3488 1 1/2" Elbow

Service Kits

(for Underdeck Model BP4410)

AK4400 Service Kit with Complete Set of Parts for Titan (Neoprene™) (See list below)

AK4419 Service Kit with Complete Set of Parts for Titan (Nitrile®)

Qty	Containing
4	Circlip
6	Screw
1	Outlet valve spring
1	Clamping nut
1	Outlet valve plate
1	Inlet valve plate
1	Outlet valve
1	Inlet valve
1	Diaphragm

AS4408 Underdeck Operating Lever Kit

Qty	Containing
4	Circlip
1	U/D operating lever
1	U/D fulcrum pin
1	Lever fulcrum pin

AS3725 Gaiter Kit for Deckplates

Qty	Containing
1	Gaiter (for plastic or metal deckplate)
1	O-ring (for metal deckplate Whale Gusher 10 & Whale Gusher 30 only)



Manual Bilge Pumps

Gusher® Titan

On Deck/Bulkhead: BP4402

Underdeck: BP4410



AK4400



AK4419



AS3725



AS4405



AS4406 for BP4402



AS4407 for BP4402



AS4408 for BP4410



AS4409 for BP4410



AS4412



DP8904



SB4222 / SB5865



SF5425

Service Kits (Continued)

DP8904 Plastic Deckplate with Lid

Qty	Containing
1	Deckplate & lid
1	Gaiter
6	Screws M6x40
6	Nuts M6
6	Washers M6

AS4412 Clamping Plate Kit

Qty	Containing
1	Clamping bolt
1	Clamping nut
1	Outer clamping plate
1	Inner clamping plate
4	Circlip

AS4409 Underdeck Clamping Ring Kit

Qty	Containing
2	Nut
4	Circlip
4	Inserts for U/D clamping ring
2	Screw
1	U/D clamping ring
1	Top clamping ring

Customer Support Services

Whale employees are committed to providing excellent customer service and product installation and maintenance advice.

**Contact our customer service team
for technical advice:**



Whale Support

UK

tel: +44 (0)28 9127 0531
fax: +44 (0)28 9146 6421
info@whalepumps.com
whalepumps.com

USA

tel: +1 802 367 1091
fax: +1 802 367 1095
usasales@whalepumps.com
whalepumps.com

Call us directly for product and installation advice

“It is refreshing to find a manufacturer that not only supplies first rate products but also gives excellent back up service...”

Ken Bell, letter to Inland Waterways News

Boat Builder Technical Partnership

Our technical support team of highly skilled marine engineers work in partnership with power and sailboat builders around the world. This collaboration delivers bespoke systems that are ideal for each builder, saving both time and money.

Please note: Illustrations are for guidance only.
For installation advice please contact Whale directly.

Neither the accuracy nor completeness of the information contained in this brochure is guaranteed by Munster Simms Engineering Limited and Whale Water Systems Inc. (a wholly owned subsidiary of Munster Simms Engineering Limited) and may be subject to change at its sole discretion. Munster Simms Engineering Limited and Whale Water Systems Inc. (a wholly owned subsidiary of Munster Simms Engineering Limited) may, at its sole discretion, change the technical performance, dimensions or appearance of any of its Whale products without prior notification to a purchaser.

Copyright Whale 2012- All rights reserved. WHALE®, GUSHER®, GULPER®, SMARTBAIL®, WHALE IC®, WHALE IC DEVICE and BABYFOOT® are trademarks of Munster Simms Engineering Limited, Bangor, Northern Ireland trading as Whale.

Whale's policy is one of continuous improvement and we reserve the right to change specifications without prior notice. Illustrations are for guidance purposes only.

Please note that by contacting Whale Support you will be indicating your consent to receiving product updates, recall information, help guides and appropriate marketing messages from us via post, email or telephone unless you indicated an objection to receiving such messages.

Santoprene® is a registered trade name of Advanced Elastomer Systems, LP, an Exxonmobil Chemical Affiliate.

Delrin®, Teflon® and Neoprene are registered trade names of Dupont Neumeurs and Co.

Monprene® is a registered trade name of Technore Apex.

Ref:db_pshaw_180.36_v3_0912